

Memorials of Stone

By Heidi Gaunt Ltd



GRANITE MARBLE & STONE SCULPTORS

We thank you for your valued enquiry and have pleasure in introducing our exclusive design book and price list.

A memorial is a lasting personal tribute to a loved one and as such the wording and any design makes it unique.

We trust that the designs illustrated herein along with some suggestions as to the wording will enable you to choose a suitable tribute.

We can include only a small number, therefore, should we not have illustrated the design or wording you have in mind, please contact us again and we will submit to you our quotation entirely without charge or obligation.

If the memorial is to be created in a churchyard, there are certain restrictions on both the finish and colour, please contact us and we shall be pleased to advise you on the relevant rules/restrictions which apply.

If you are unable to visit us at our showrooms, our representative will be pleased to call on you without any obligation to order. He can show samples of the various materials, and also offer advice as to the layout and wording of your choice.

Trusting we may be favoured with your instructions which will receive our personal and careful attention.

Disclaimer Due to the Full Colour Printing Process, the colour portrayed in this brochure may not accurately represent the finished product. It is therefore recommended that the material is viewed to prevent any disappointment.

GRAND COLLECTION



A selection of grand monuments in a choice of materials, colours and finishes. Please see back of brochure for a selection of alternative materials.

Please find the various designs for kerbs



CJK1
Square



CJK2
Deep Chamfer
or Splay



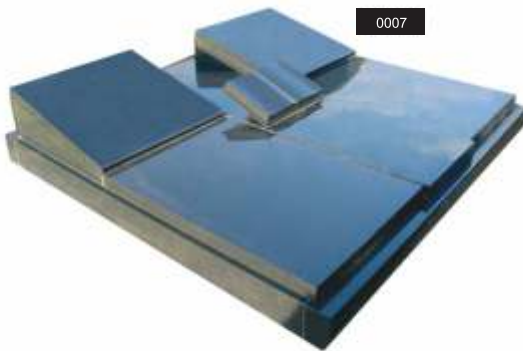
CJK3
Chequered or
Rebate



CJK4
Scotia



0006



0007



0008



0009



0010



CJK5
Chamfer



CJK6
Half Bullnose



CJK7
Roll Top

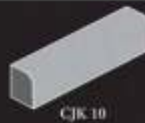
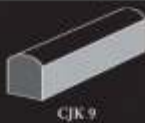


CJK8
Flat

*You can match any headstone in this brochure
with any kerbs set of your choice.*



All memorials are available in any colour of your choice, with or without carving.



A selection of exclusive monuments in a choice of materials, colours and finishes. Please see back of brochure for a selection of alternative materials.



0015



0016



0017



0018



0019



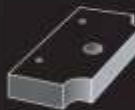
B1
Square



B2
Oval



B3
Bow Front



B4
Scalloped Corners



B5
Block

Please find the various designs for 'base stones'.

A selection of executive monuments in a choice of materials, colours and finishes. Please see back of brochure for a selection of alternative materials.



0020



0021



0022



0023

Please find the various designs for 'base stones'.



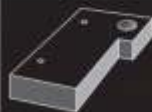
B6
Opus



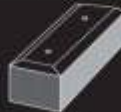
B7
Serpentine



B8
Checked Green



B9
Other



B10
Weathered Block

A selection of traditional monuments in a choice of materials, colours and finishes. Please see back of brochure for a selection of alternative materials.



0024



0025



0026



0027



0028

TRADITIONAL COLLECTION



B11
Centre Splayed



B12
Through Cutout



B13
1/2 Ogee



B14
Scotia Corner



B15
Stepped Base

All memorials are available in any colour of your choice, with or without carving.



0029



0030



0031



0032

Please find the various designs for 'standard' headstone tops.



CJS 1
Square Top



CJS 2
Checkered Top



CJS 3
Raised Shoulder



CJS 4
Square Top and
Scotia Corner



CJS 5
Square Top Checkered and
Rounded Shoulder

A selection of traditional monuments in a choice of materials, colours and finishes. Please see back of brochure for a selection of alternative materials.

0033



0034



0035



0036



0037



0038



TRADITIONAL COLLECTION



CJS 6
Plain Top



CJS 7
Offset Plain Top



CJS 8
Plain with Cheeks



CJS 9
Square Top and
Splayed Corners



CJS 10
Square Top
Gothic Shoulders

All memorials are available in any colour of your choice, with or without carving.



0039



0040



0041

Please find the various designs for 'standard' headstone tops.



CJS 11
Oval, Arc or Cambrel



CJS 12
Oval with Shoulders



CJS 13
Oval with Checks



CJS 14
Square Top Double
Rounded Shoulders



CJS 15
Half Round

A selection of junior monuments in a choice of materials, colours and finishes. Please see back of brochure for a selection of alternative materials.



0042



0043



0044



0045



0046

JUNIOR COLLECTION



CJS 16
Ogge Top



CJS 17
Half Ogge Top



CJS 18
Serpentine Top



CJS 19
Ogge with Checks



CJS 20
Oval Top
Scotia Shoulders

All memorials are available in any colour of your choice, with or without carving.



0047



0048



0049



0050



0051

Please find the various designs for 'standard' headstone tops.



CJS 21
Square Top
Rounded Shoulders



CJS 22
Round Top
Rounded Shoulders



CJS 23
Oval Top Checked
Rounded Shoulders



CJS 24
Square Top
Ogee Shoulders



CJS 25
Oval Top
Ogee Shoulders

GRANITE, MARBLE & STONE SCULPTORS

(COLOUR REPRESENTS THE GENERAL APPEARANCE OF THE STONES, VARIATIONS IN COLOUR & STRUCTURE ARE PART OF THE NATURE & THUS UNAVOIDABLE)
THESE ARE A SMALL SELECTION OF ALTERNATIVE MATERIALS AVAILABLE

Our full colour range is available to view - Please visit www.cjimports.co.uk



BLACK



BLACK GALAXY



BLUE PEARL



INDIAN YORK STONE



SOUTH AFRICAN DARK GREY



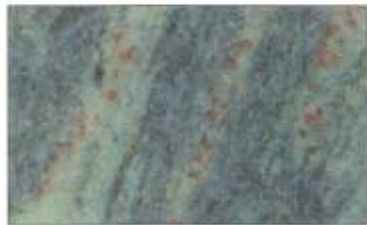
DARK NERO IMPALA



BRITZ GREY



SIRA GREY



TROPICAL / ROYAL GREEN



BAHAMA BLUE (DARK)



RUBY RED



INDIAN AURORA

Renovation Services of Headstones, Kerb Sets & Plaques

Is your memorial in need of
a professional clean or refurbishment?

Why not contact us to give you
a free, no obligation itemised quote.

After



Before



All we need from you is:
*Cemetery Location
*Grave Details/Numbers
We will do the rest.



STONEGUARD
for eternal peace of mind

Of course you will care for the grave of a loved one, but who will safeguard the memorial, and repair or replace it if it is defaced or damaged over the years?

It is a sad reflection on today's society that many memorials suffer meaningless vandalism. These attacks are not restricted to grand or elaborate monuments: often the simplest family stones are the target of malicious or accidental damage.

Whilst it's impossible to prevent this distressing possibility, Stoneguard Insurance can insure that any damage can be put right very quickly - even to total replacement of the memorial.

Stoneguard insurance is affordable, with renewable policies on 5 year terms. For more information on this unique insurance scheme, contact your personal Funeral Director or Monumental Mason.

CLEANING YOUR MEMORIAL

CLEANING NATURAL STONE & MARBLE

Natural stone is unpolished quarried stone. This includes Nabresina, Portland, York and Purbeck and tends to be used for churchyard memorials. All natural stones have porous qualities and therefore absorb moisture and consequently will become dirty, discoloured and can be prone to mosses and lichens.

White Marble is the most widely used stone in cemeteries. Its rubbed finish has natural veins of colour, so the stone can be white to blue and grey white. Its subtle shade and permeable qualities encourage a quick build up of discolouration and grime.

The same method can be used to clean natural stone and marble. Use CLEAR bleach and a hard bristled scrubbing brush. A soft bristled brush should be used for the lettering. Spray bleach liberally over the entire memorial using the appropriate brush to remove any stubborn dirt/grime, taking care not to dislodge any of the lettering, photoplaques or ornaments. After the natural colour of the stone has reappeared and seems to be clean, the stone must then be rinsed several times with clean, cold water to wash off any excess chemicals.

POINTS TO REMEMBER

- Do regularly spray with clear bleach.
- Do use soft scrubbing brush on the lettering.
- Don't leave fresh flowers to decay. Remove at first sign of decay as this will cause staining that can not be removed.
- Don't place potted plants on memorial. The soil will cause unmoveable stains to the memorial surface.
- Don't use a hard bristled brush on the lettering.

CLEANING GRANITE STONE

Granite is a granular crystalline rock of quartz, found in many different colours. Known as the everlasting stone, granite is a solid stone that does not have porous characteristics.

It is common for the face of the memorial to be highly polished. Polished areas are very easy to clean, as dirt can not take hold on the shiny surface. The sides and reverse of a granite memorial can be polished, honed or rustic. Rustic surfaces will collect dirt, moss and lichen due to its rough texture.

To clean the rustic or honed faces of a granite memorial use the same method used for natural stone and marble. To clean the highly polished face of a granite memorial use a cuttle-fish. The abrasive action of rubbing the soft side of the cuttle-fish on the dirty area will clean the memorial and restore the shine. A very soft bristled brush and soapy water can be carefully used on the lettering. Never use cream cleaner, an abrasive or scourer to clean a polished granite memorial as this can permanently spoil the finish.

POINTS TO REMEMBER

- Do use soft side of cuttle-fish to clean polished surfaces.
- Do use clear bleach and hard bristled brush on honed and rustic surfaces
- Don't use any cream cleaners or abrasive scourers to clean polished surfaces
- Don't scrub at any letters with a hard bristled brush. Use a soft brush and soapy water.

INSCRIPTION SUGGESTIONS

Precious Memories Of

FRED SMITH

A DEVOTED HUSBAND

FATHER & GRANDFATHER

Born 10th June 1928

Died 1st October 1996

Rest In Peace

Treasured Memories Of

With Love We Remember

Cherished Memories Of

In Loving Memory Of

Sacred To The Memory Of

Our Darling Daughter

A Devoted Brother

A Loving Wife, Mom & Nan

The Dearly Loved Husband Of

A Beloved Friend

Died 2nd Oct. 1912, Aged 88

19th May 1934 - 9th Feb 1990

1927 - 1998

7.12.1965 - 18.12.1997

Who Passed Away 12.5.1998

Aged 75 Years

SUNRISE 1932 - SUNSET 2002

Fell Asleep 25th July 2001

To us you were so special,

What more is there to say,

We only wish with all our hearts,

You were here with us today.

God Took You From Our Home

But Never From Our Hearts

Sweet are the memories that never fade

To Live In The Hearts Of Those

We Love Is Not To Die, Goodnight

God Bless

FOREVER WITH THE LORD

Gone but not forgotten

A Little Flower Lent Not Given

To Bud On Earth & Bloom In Heaven

Peace, Perfect Peace

Greatly Loved & Sadly Missed

REUNITED R.I.P

Loves Last Gift, Remembrance

Those we love don't go away,

They walk beside us everyday

ALWAYS IN OUR THOUGHTS

Till We Meet Again

Remembered with a smile

Gone is the face we loved so dear,

Silent the voice we loved to hear

A Special Smile,

A Special Face

Inside Our Hearts

A Special Place.

INSCRIPTION STYLES

In Loving Memory Of

(Magie)

1

To The Beautiful Memory Of

(Delphin)

8

Precious Memories Of

(Carton)

2

Loving Memories Of

(Tirant)

9

In Remembrance Of

(Black)

3

Treasured Memories Of

(Freebooter)

10

With Love We Remember

(Chancery)

4

Cherished Memories Of

(M-Corsiva)

5

Sacred To The Memory Of

(Times Roman)

6

Fond Memories Of

(Old-English)

7

BRAMM Fixing

Memorial Bolting System Explained



After the lettering and any design have been applied, the headstone is placed upside down on the trolley. Stainless steel threaded dowels, 150mm x 16mm, are set into the fixing holes with specialist resin. Spacer tape then applied to the edge of the headstone.



Bases are prepared for flower containers and anchor holes by diamond coring with the appropriate size core drill.



This base has been prepared with two 90mm holes for flower containers, a 30mm vent hole for our NAMM approved ground anchor system. Left and right of centre hole are two 25mm holes to allow the dowels through and a 50mm rebated hole to allow for the washer and nut.



The headstone is set in position and the base offered up.



With the base now in position the nuts and washers are added.



The nuts are now torqued to 65lb/ft for a secure cement free fixing.



Cotswold Collection





0052



0053

0054



0055



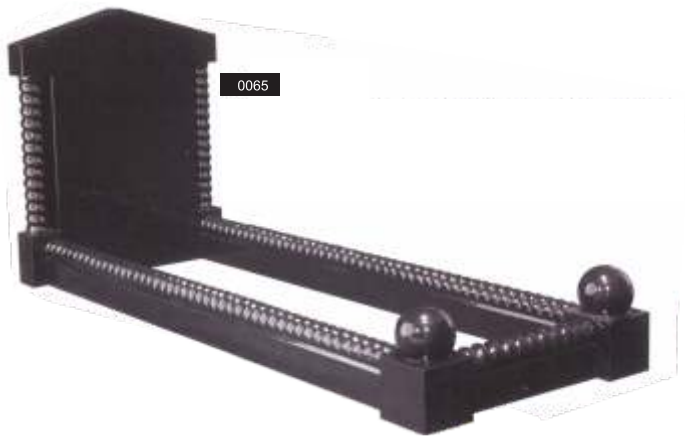
0056



0057

0058







0067



0068

0069



0070



0071



0072



0073



0074



0075



0076



0077



0078



0079



0080



0081



0082



0083



0084



0085



0086



0087

0088



0089



0091

© 2011 American Granite Monument Co.



0090



0092



0093



0094



0096



0095



0097



0099



0098



0100



0106



0107



0108



0109



0110





0111



0112

0113



0114



0114



0115



0116



0117



0118



0119



0120



0121



0122





0132



0133



0134



0135



0136



0137



0138



0139



0140

Memorials of Stone by Heidi Gaunt Ltd
51 High Street, Blackheath
West Midlands, B65 0EH
Telephone : 0121 559 1062